



P R E M I U M
F E N C E

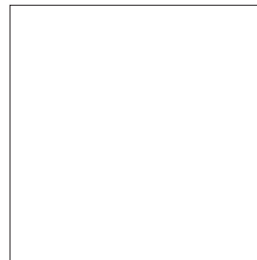
COUNTRY ESTATE VINYL
LAKELAND PRIVACY FENCE



A timeless privacy fence design, available in multiple colours and textures. This VMA approved product is manufactured by Country Estate Vinyl, the inventors of vinyl fencing.

The Lakeland provides full privacy utilizing interlocking tongue and groove boards, and it is stronger than most alternatives, due to the heavy duty 2" by 7" top and bottom rails, and extra thick 5" by 5" posts. This fence can be constructed anywhere from 3' high to 8' high. It can be customized to look sharp in any situation, as you can see in the pictures.

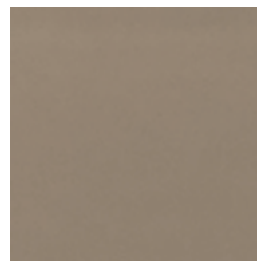
Colours



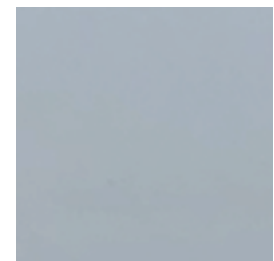
White



Almond



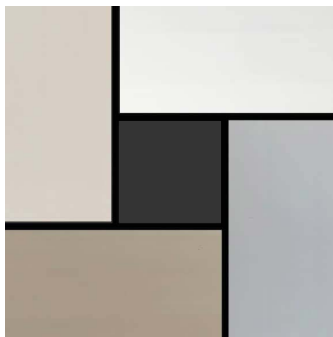
Adobe



Gray



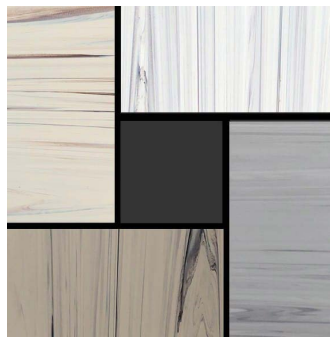
Finishing Choices



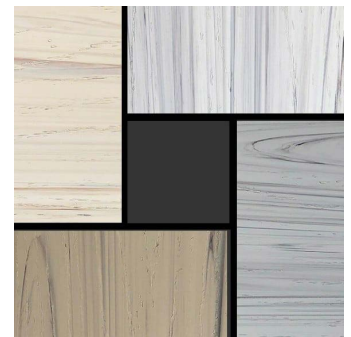
Smooth



Embossed



Streaked



Streaked & Embossed

Maxwell Top-Rail Variation



Heavy Duty 2x7" rails as compared to standard sizing. This makes the fence a lot stiffer.



Versatile



Our vinyl gates have a stiff diagonal brace attached to prevent sagging, and the vinyl posts which they are mounted to, have a metal stiffener inserted to avoid leaning or flexing. Commercial grade latches and hinges are stainless steel/powder coated.

Key-lock latches are available.

Padlock-able latch

Adjustable self-closing hinges

